

## LightPath™ PL500 Series

PRODUCT  
DATASHEET

### 12VAC SERIES SEAT LIGHT

Permlight's PL500 Series LightPath product line is designed to be mounted on the side of theatre seats located between hallways, pathways and aisles. This design provides the illumination necessary to navigate within a dimly lit environment. Constructed with black or gray heavy-duty housing, to protect the lighting system from

typical abuse and tampering, the PL500 series comes ready to install with Class II wiring and is available with amber, blue, green, red or white LEDs installed. The SeatLight can be combined with other LightPath products and meets the NFPA's Life Safety Code 101 for egress lighting and is ETL approved device.

### Features/Benefits

- Heavy-duty black or gray plastic housing.
- Illuminated top tread provides clean definition.
- High-output, long lasting LED's, provide up to 100,000 hours of operating life.
- ETL approved and complies with ADA guidelines.



### Technical Data

#### ELECTRICAL CHARACTERISTICS

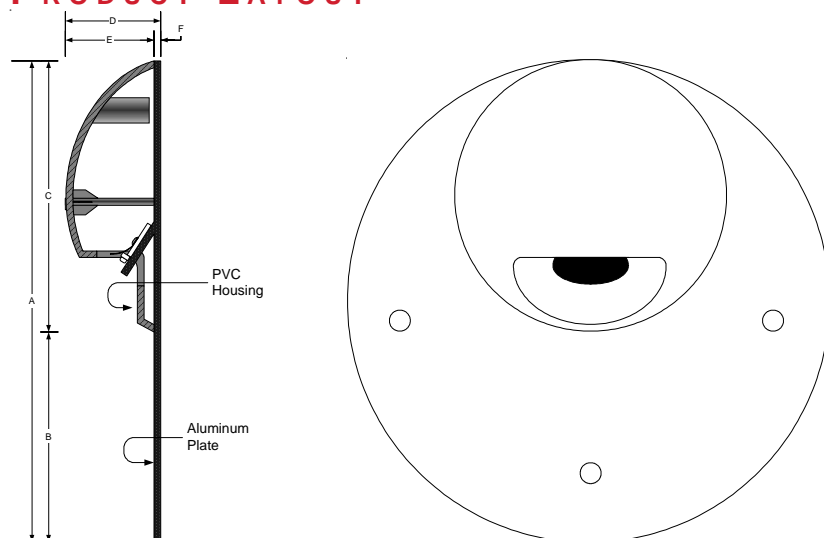
Ambient Temperature Operating Range ..... -20°C to +60°C  
Storage Temperature Range ..... -40°C to +100°C

#### ELECTRICAL SPECIFICATIONS

Light Source ..... LED (light emitting diode)  
Operating Voltage ..... 12volts AC  
Power Consumption ..... 1.0 watts  
LED Life Span ..... up to 100,000 hours  
Required Power Supply ..... see power supply section on page 2

Note: This product is meant for indoor use only.

#### PRODUCT LAYOUT



### Applications

- Interior Aisle Lighting for Cinemas, Theatres or Any Dimly Lit Environment.
- Emergency Exits



Dim	Inches	Millimeters
A	5.75	146.05
B	2.51	63.75
C	3.24	82.29
D	1.14	28.95
E	1.06	26.92
F	0.08	2.03

For the latest technical information visit:  
[www.permlight.com](http://www.permlight.com)

## Order Information

Description	Part Number	LED Color
SeatLight Series	500	A = Amber B = Blue G = Green R = Red W = White

Example: A SeatLight with amber colored LEDs would be ordered as:  
500-A

## Accessories

### POWER SUPPLIES

#### 250 Watt PL250-12D (plug in) or PL250-12D-C (Hardwire)

120 Volts AC to 12 Volts DC - 4 Circuit Power Supply

<http://www.permlight.com/pdf/250-12D.pdf>

#### 60 Watt PL60-12D-ADV (Hardwire)

120 Volts AC to 12 Volts DC - single Circuit Power Supply

<http://www.permlight.com/pdf/advanceleddrivers.pdf>

#### 12 Watt PL12-12D-ADV (Hardwire)

120 Volts AC to 12 Volts DC - single Circuit Power Supply

<http://www.permlight.com/pdf/advanceleddrivers.pdf>



**12 Watt**

AC input: 5-inch 18AWG leads  
Line (black), Neutral (white)

DC output: 5-inch 18AWG leads  
Positive (red), Negative (blue)



**60 Watt**

AC input: 5-inch 18AWG leads  
Line (black), Neutral (white)

DC input: 5-inch 18AWG leads  
Positive (red), Negative (blue)